



a closer look

**white paper -
digital offset color**



contents

what is digital offset color?	3
hp ElectroInk	4
thermal offset	5
color switching	5
quick guide to the hp indigo digital offset color printing process	5
the printing cycle	5
some detail notes	6
digital offset color advantages	6
quality characteristics	6
substrate compatibility	9
summary	10
the family of hp indigo digital presses	11
the future of hp digital offset color	12

introduction

HP's range of Indigo digital printing presses, based on its digital offset color technology and process, offers a unique combination of high quality imaging, speed, wide color gamut, substrate versatility and the ability to vary every printed copy.

This white paper describes the HP Indigo digital offset color printing process and its unique features. It also compares digital offset color with xerographic (dry toner) digital printing presses, and the conventional, non-variable offset lithography process that has traditionally dominated the worldwide printing industry.

HP offers a wide range of presses for a variety of applications, all based on the basic principles of its digital offset color technology.

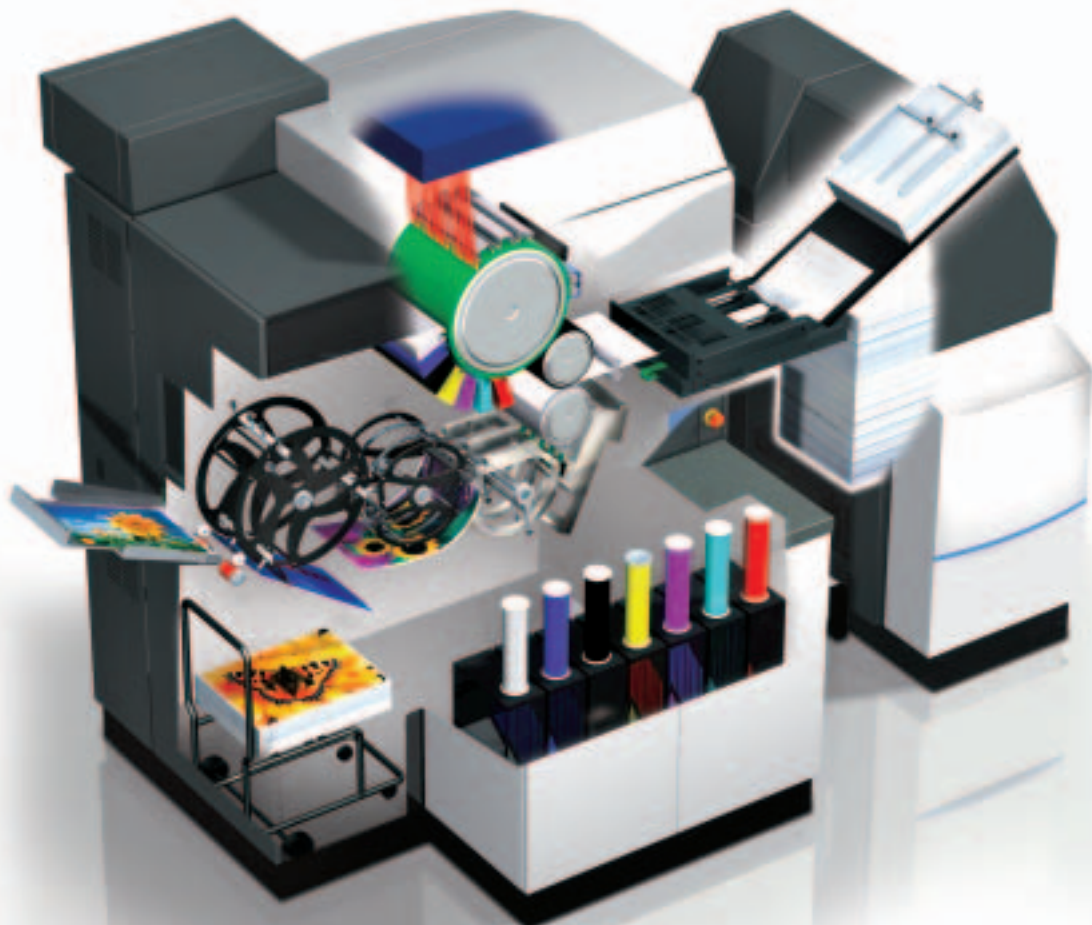


Fig. 1: hp indigo printing engine

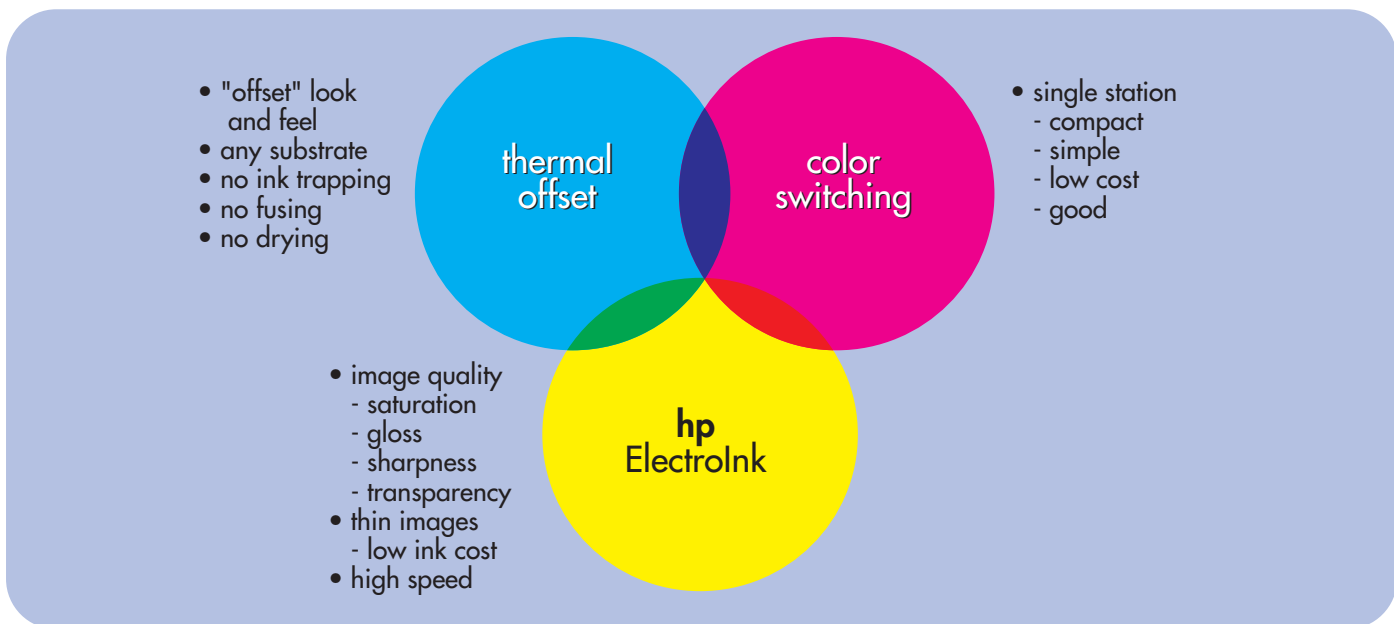


Fig. 2: digital offset color core technologies

what is digital offset color?

let's break it down word by word:

1. digital

The printed image is created directly from digital data; in other words, pages, text and images created with electronic layout and/or desktop publishing programs.

Unlike conventional printing processes, there are no intermediate pre-press processes between the digital document file and the final print. No film, no imagesetters, no plates, no platesetters, no photochemicals and no waste.

There is also no press make-ready: no plate mounting, no registration adjustments, and no ink keys. HP's process is fully digital from creation to printing. And, since it is fully digital, every image can be a new one, enabling information to be completely varied as required.

2. offset

Offset simply means that there is an intermediate cylinder that transfers the ink image from its origin on the plate cylinder to the final substrate (i.e. the paper, plastic or other material) which is to be printed.

In the printing industry, the term 'offset' is commonly used as a term for the lithographic process. Indeed modern lithographic (also called litho) presses do use an offset process.

HP's technology also uses offset printing, based on the use of an offset cylinder covered with a renewable rubbery blanket.

The main purpose of offsetting on the press is twofold. First, it protects the surface of the printing plate from excessive wear due to friction with the substrate as it is printed. Secondly, it compensates for any unevenness of the substrate surface by enabling ink to reach the bottom

of any depressions or grain. In other words, it acts as a kind of shock absorber and pressure pad, ensuring an even pressure, and therefore ink transfer, from blanket to substrate.

Offset presses can therefore print on a very wide range of substrate surfaces and thickness, and are superior to non-offset processes in this respect. HP's process uses offset for the same reasons, thus making it capable of printing on a wide range of substrates.

One notable difference between conventional offset and HP's offset printing technology, is that HP's ElectroInk transfers completely from the blanket to the substrate with no ink splitting that characterizes all conventional offset printing systems. This means that a new separation, in a different color, can be created for every rotation of the press. HP calls this 'on-the-fly color switching'.

3. color

As it simply sounds, HP's technology enables digital printing in full color. However, unlike conventional offset litho color presses, which require one complete printing unit per color, HP Indigo presses print multiple colors for each single pass of the substrate through the press.

Printing with five, six or seven colors, in addition to CMYK, offers major enhancements in color quality, range, fidelity and luminosity.

In summary - HP combines digital, offset, and color into a powerful printing process.

The three core technologies of the HP Digital Offset Color process are:

- hp ElectroInk - hp's liquid ink
- thermal offset transfer technology
- on-the-fly color switching

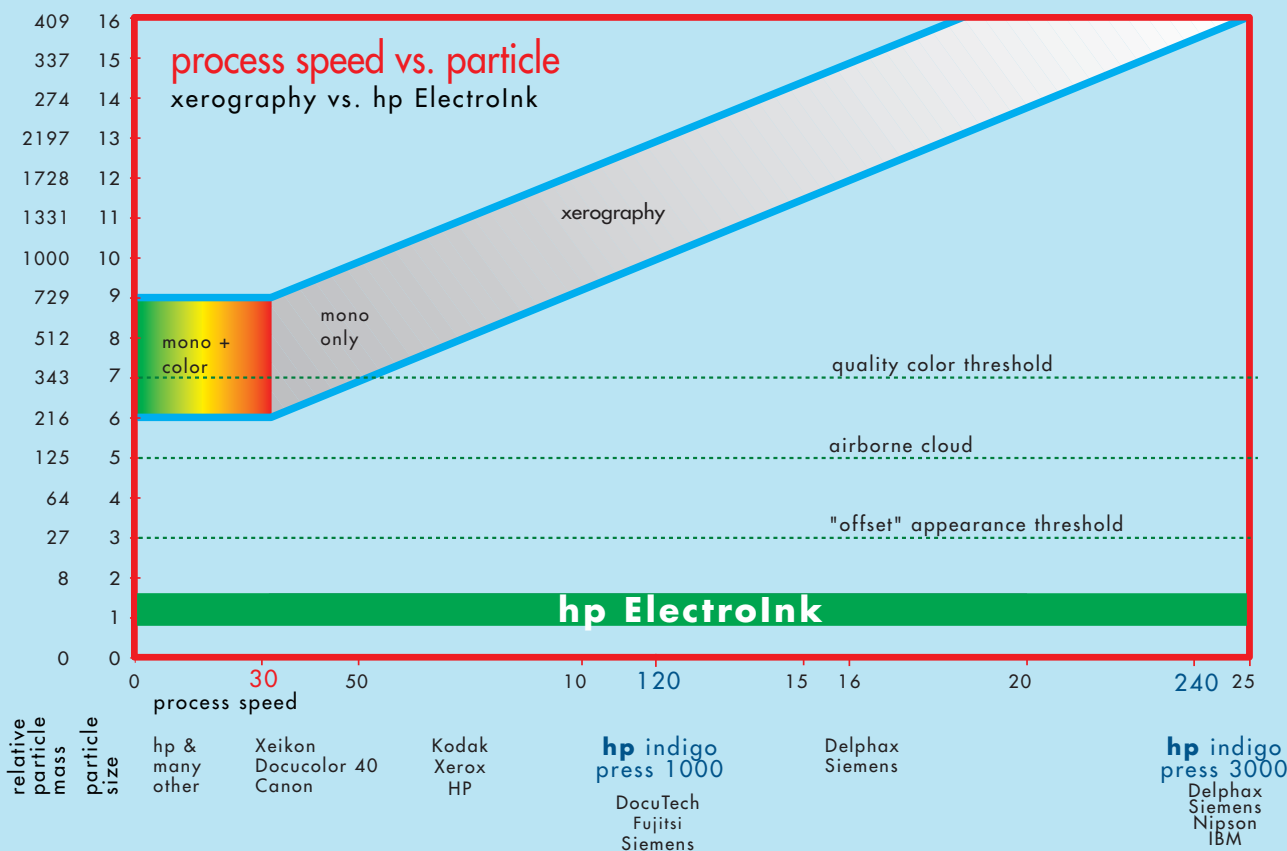


Fig. 3: process speed vs. particle size

hp ElectroInk

All digital HP Indigo presses use ElectroInk, HP's unique liquid ink. HP ElectroInk contains electrically charged ink particles, in a liquid. Like other digital printing technologies, i.e. powder toner xerography, HP ElectroInk enables digital printing by electrically controlling the location of the print particles. However, unlike powder toner xerography, HP ElectroInk enables very small particle size, down to 1-2 microns. This small particle size in the liquid carrier enables higher resolution, uniform gloss, sharp image edges, and very thin image layers. The thin image layer closely follows the surface typography of the paper resulting in a highly uniform finish complementing that of the paper. In other words, HP ElectroInk enables printing that matches conventional offset printing quality. In powder toner xerography, on the other hand, the particle size cannot be made too small, as particles then become airborne, and uncontrollable. Therefore, the higher the printing speed in digital printers, the larger particle sizes must become. HP ElectroInk, being electrically charged particles in liquid, enables controlling even the smallest particle sizes required for quality color printing (see fig.3).

In summary, HP's ElectroInk enables high quality, sharp images, and high gloss color, similar to conventional offset printing, and exceeding the quality achieved by competing digital printing technologies.

HP ElectroInk is available in an increasing range of colors, including:

- standard process colors CMYK (cyan, magenta, yellow, black)
- hp IndiChrome wide-gamut six-color set. These incorporate orange and violet inks to extend the color reproduction capabilities far beyond the range possible with CMYK inks only
- hp IndiChrome spot colors - mixed from a set of base inks, matching spot colors including most of the PANTONE® color range
- opaque white base coat for clear and self-colored substrates for HP presses using One-Shot Color technology
- fluorescent inks
- special security inks

HP ElectroInk is supplied as a concentrated paste that is loaded into the press in tubular cartridges in a 'clean hands' operation. Inside the press it is fed into ink supply tanks and diluted with oil, to form a fluid mixture of carrier liquid and colorant particles ready for printing.

thermal offset

The HP Thermal Offset process uses a heated blanket causing the specially shaped pigment-carrying particles within the HP ElectroInk to melt and blend into a smooth film. When it contacts the cooler substrate, the HP ElectroInk immediately solidifies, strongly adheres and transfers to the substrate. The print is effectively dry as soon as it leaves the press, eliminating any risk of ink 'set-off' marking other copies. Print finishing can be performed immediately. This is a major benefit over conventional lithography which requires either assisted drying systems, or a 'natural' drying time of several hours, before any print finishing processes can be applied.

In summary, HP's offset technology enables the "look and feel" of conventional offset printing, the ability to print on virtually a limitless substrate range, and the capability of immediate drying, which enables duplex printing or finishing with no need to wait.

color switching

HP's Digital Offset Color printing technology enables the printing of all color separations with a single station. After one color separation has been created and printed, the next one (a different color) is created and printed on the same station. This is possible since the blanket completely transfers the previous image, and none of the image stays on the blanket.

Single station printing has several advantages, including compactness, lower cost of hardware, and better mechanical accuracy, which translates, for example, to better registration.

quick guide to the hp indigo digital offset color printing process

the printing cycle

The HP printing engine basically performs the following operations sequentially:

1. electrostatic charging of the electrophotographic Photo Imaging Plate (PIP) which is mounted on the imaging cylinder.
2. exposure of the PIP by a scanned array of laser diodes. These lasers are controlled by the raster image processor which converts instructions from a digital file into 'on/off' instructions for the lasers.
3. image development performed by the Binary Ink Developer (BID) units.
4. transfer of the inked image to the blanket cylinder.
5. removal of any residual ink and electrical charge from the PIP.
6. heating of the inked image carried by the blanket.
7. transfer of the heated inked image to the substrate held by the impression cylinder.

These operations repeat themselves for every color separation in the image.

They are now discussed in more detail starting with charging of the PIP.

1. PIP charging

A clean, bare PIP segment rotates under a corona wire called the Scorotron. The Scorotron unit generates electrical charges which flow towards the PIP surface and cover it with a uniform static charge.

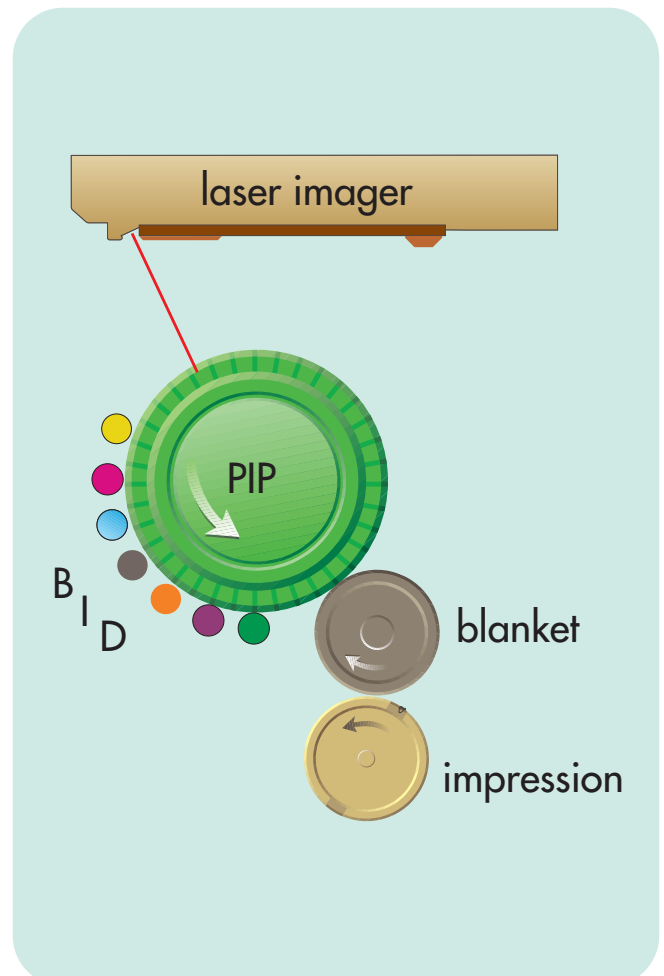
2. PIP exposure

As the PIP cylinder continues to rotate, it passes the imaging unit where up to 12 laser beams expose the image area, dissipating (neutralizing) the charge in those areas. When the exposed PIP rotates toward the next station it is actually carrying a 'latent image' in the form of an invisible electrostatic charge pattern that replicates the image to be printed.

3. image development

Inking is performed by the Binary Ink Developer (BID) units, one for each ink color. During printing the appropriate BID engages with the PIP drum, inking the discharged image areas using an inking roller. HP ElectroInk is also charged. The opposing electrical fields between the PIP and the BID, result in attracting the ink particles to the image area and repelling them from the non-image areas.

Fig. 4: the printing cycle



4. first transfer

The PIP then rotates into contact with the electrically charged blanket on the transfer cylinder, and the ink layer is electrically transferred to the blanket.

5. cleaning station

Finally, the PIP rotates past a cleaning station which removes any residual ink and discharges the residual voltage. At this point this part of the plate surface has made a complete rotation and is ready to be recharged ready for the next image.

6/7. second transfer

Meanwhile, on the rotating and heated blanket, the HP ElectroInk is being heated, which causes the particles to partially melt and blend together, forming a hot adhesive liquid plastic. As the ink comes into contact with the substrate, which is significantly below the melting temperature of the particles, the ink solidifies, sticks to it, and 'peels' off completely from the blanket, ensuring 100% transfer from blanket to substrate. The blanket is therefore clean and ready to accept the next impression as it rotates past the PIP cylinder.

As mentioned before, HP Indigo presses print multiple colors from the same 'offset' blanket. The cycle repeats itself for each color separation and the only difference between the cycles is in the ink application and the image data corresponding to the printed color separation.

some detail notes

This imaging and HP ElectroInk application process is essentially the same for all HP Indigo presses, although there are detail differences between models.

Series 3000/4000 products use the Binary Ink Development units as described above, while on Series 1000/2000 products the ink is injected along the length of the gap between the PIP and a single developer roller.

Another detail change relates to the second transfer. The sheet-fed models for commercial printing use the 'multi-shot' imaging sequence. These are the HP Indigo Press 1000 and the HP Indigo Press 3000 models.

In 'multi-shot', one color separation is created at a time on the PIP, then transferred to the blanket and onto the substrate, as described above. The substrate stays on the impression cylinder or several rotations as it receives each separation, printed separately one after the other. As the final separation is printed, the substrate is delivered for duplexing or to the output tray.

HP Indigo's web-fed presses employ a 'One-Shot Color' process, as it is not possible to wrap the material around the impression cylinder for multiple passes. In this case, the PIP cylinder rotates several times, transferring a succession of separations and building them up on the blanket, before they are transferred to the substrate all in the same impression pass. This process is also relevant for HP Indigo's industrial presses printing on thick and stiff substrates like cartons and plastics.

After describing the technology and the process, let's touch on the advantages which stem from them.

digital offset color advantages

quality characteristics

1. edge sharpness and definition

Viewed at high magnification, it is easy to see that HP ElectroInk forms much sharper images than xerographic dry toners, and it is even superior to offset lithographic dots. The sharpness of HP ElectroInk is particularly noticeable at the edges of halftone dots, or fine type characters. Also noticeable is the contamination-free background of HP ElectroInk images. This is due first to the small size of the ink particles and second to the way the HP ElectroInk particles are transformed when they are on the press.

As mentioned, several mechanical and electrostatic processes take place on the Photo Imaging Plate cylinder, which have the effect of concentrating the ink particles and giving image areas a clean, sharp edge.

Also, when the ink is transferred to the heated blanket, because the ink particles melt and blend, the strong surface tension of the liquid ink facilitates the formation of a sharp, clean edge.

When transferred from the blanket to the final printing substrate (paper or plastic), the heated liquid plastic cools down to form a thin colored plastic layer on the substrate surface. When printing on paper, the cooled HP ElectroInk does not soak (or 'wick') into the paper fibers. Thus, printed dots, linework and text, stay sharp and well defined on the surface of the paper.

Like HP ElectroInk, xerographic dry toners don't penetrate the paper either, but they do suffer from large particle size and stray toner particles scattered outside the image edges, leading to poor edge definition no matter what substrate is used.(see fig.5)



hp ElectroInk



xerography (power toner)

Fig. 5: hp ElectroInk vs. xerographic toners

2. dot gain and color consistency

Dot gain - the tendency for printed dots and lines to spread out and enlarge as the ink image passes through the pressure of transfer - is consistent and predictable on HP Indigo Digital Offset Color presses. HP Indigo presses have built-in dot gain compensation which corrects the exposed dot size so that it prints to the desired size. In addition, HP Indigo presses automatically adjust the optical density (i.e. appearance in terms of lightness or darkness) and dot size so that they always appear the same, copy after copy.

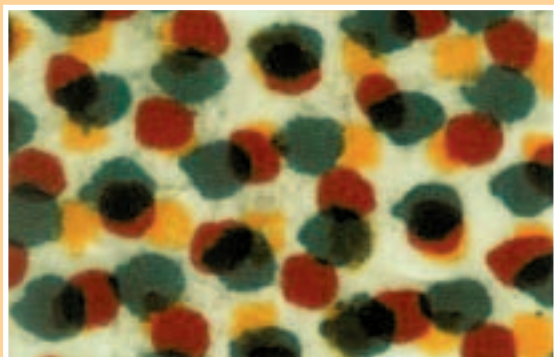
With a conventional offset lithographic press, there are wider fluctuations during a run caused by factors that include: fluctuating ink and water temperature; water/ink balance and their tendency to emulsify; plate and blanket wear; and atmospheric humidity altering the absorbency of the paper. Neither automatic nor manual adjustment can completely iron these out, because there is

always a time lag between the problem appearing and the adjustment taking effect, during which many copies are printed.

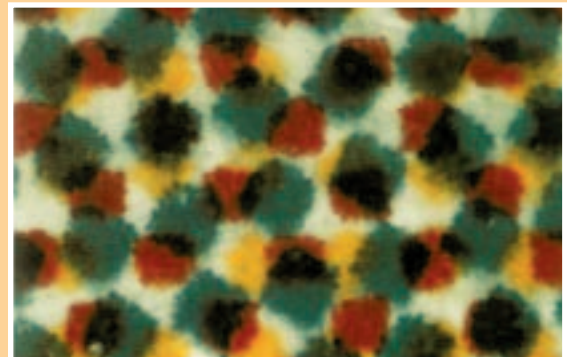
With HP Indigo presses there are fewer operating variables, and the optical density of the printed image can be electronically set by the operator within a wide operational range.

Once set, a proprietary closed loop mechanism, called Color Adjust, regulates and monitors the print density and the dot size in real time throughout the job run. Just as importantly, Color Adjust will remember the adjustments for repeat runs in future, meaning that a repeat job will be identical to the original - this is difficult to achieve with lithography which depends to a great extent on operator skill.

Fig. 6: dot shape - hp ElectroInk vs. offset



hp ElectroInk



offset

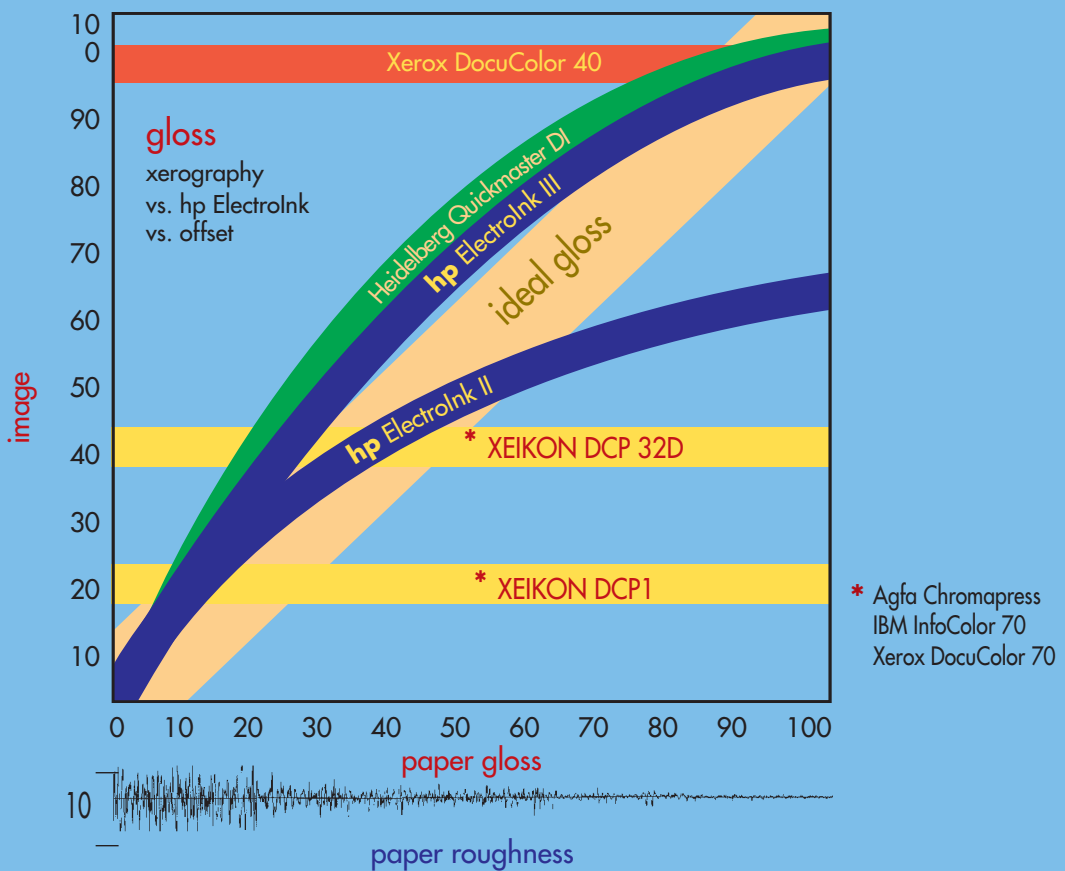


Fig. 7: image gloss as a function of paper gloss

3. image gloss

Many people believe that the key to the quality of offset litho printing is its glossy appearance. This isn't quite true - what matters is the uniformity of the gloss. For instance, many magazines and company brochures have varnished front covers to give a high quality feel, but either gloss or matt varnishes may be used. The uniformity of the finish is the key issue rather than just its surface gloss.

HP ElectroInk gives a highly uniform finish complementing that of the underlying substrate - whether the substrate is a high gloss coated paper or a rough matt paper.

This characteristic is a very important feature of the HP Indigo process. It is very different from xerographic dry toner printers and copiers, which produce images having the same gloss irrespective of the paper they are printed on, and thus suffer from variable gloss levels between shadow areas (i.e. solid toner coverage) and highlight areas (with little or no toner coverage).

HP ElectroInk images match the gloss of the underlying printing substrate, from rough to dull to high gloss, just like conventional offset prints. Paper stocks have a typical surface roughness ranging from about 1 to 10 microns in height. The HP ElectroInk layer is only about one micron thick, and therefore it follows the 'hills and valleys' of the substrate surface texture, rather than filling them in. The result is that there are no large variations in gloss between the inked image areas and the bare paper substrate. (see fig.7)

Even the finest xerographic color toner is limited to a particle size no lower than 7 to 9 microns, otherwise it is too fine to be controllable and forms a powder cloud or dust. Since powder toner particles are so large, they create thick images - which cannot replicate the surface roughness of the paper. Powder toner images therefore have their own unique gloss which contrasts with the gloss of the paper. This gloss non-uniformity is perceived as poor quality printing.

It is possible to plot the gloss characteristics of the various digital and lithographic processes on a graph which demonstrates that HP ElectroInk has practically ideal reflective characteristics, nearly matching the paper gloss for all but the very smoothest coated surfaces.

Xerographic toners plot as straight horizontal lines on the graph, indicating they have their own gloss no matter what the substrate.

4. color space

HP ElectroInk can be used to print according to the main international color standards. These standards are all based on the four 'process' ink colors - cyan, magenta, yellow and black (CMYK).

Lithography uses different ink formulations for each standard, but HP ElectroInk uses one color set for all the standards and then meets their specific needs by electronically varying the thickness (and therefore color

density) of the printed ink. This is a unique ability of HP ElectroInk, and is due to its specific formulation and the electrical nature of the ink.

In addition to printing in the four process colors, HP IndiChrome ElectroInk inks expand the color gamut beyond what can be achieved with CMYK alone. HP IndiChrome enables both six-color process printing and spot color matching.

The unique HP Indigo Ink Mixing System provides great flexibility to customers wishing to match specific PANTONE® spot colors. The System allows users to mix on-site a wide range of special colors from a set of 11 base inks, with fully automated software guiding the user through the measurement, analysis and mixing steps.

5. instantaneous image drying

Because HP ElectroInk solidifies as soon as it transfers to the substrate, the finished print emerges dry from the HP Indigo printing press. Further image hardness is acquired in the first few hours post printing.

HP Indigo printed material can withstand considerable handling activities immediately, unlike conventional offset lithography, not equipped with assisted drying, that requires a drying period of several hours before further processes, such as cutting or folding, can be performed.

Print drying is considered by GATF (The Graphic Arts Technical Foundation) as the number one problem of conventional lithographic printing, responsible for many image artifacts and defects, as well as print operation issues.

Conventional litho inks depend on a process known as 'oxidation drying' which mainly relies on absorption and evaporation of the solvent carrier. There are accelerated drying techniques available, usually involving heat or irradiation, but these require additional capital investment, use more energy and create hydrocarbon emission and corresponding pollution problems.

When heat is used it can also dry out the paper, driving out moisture. As the paper stack paper cools down, there is a danger that the edges will re-absorb water from the atmosphere and swell slightly. The middle of the stack, which is not exposed to the air, will not absorb water, so the edges will distort and take on a characteristic wavy formation causing problems at the finishing stage or if sheets have to be turned and printed on the reverse.

Another form of drying used with conventional offset lithography involves specially formulated photopolymer inks which solidify on exposure to ultra-violet lamps on the press. However, the UV inks are relatively expensive, and they are unpleasant to work with: un-solidified ink can often trigger allergic skin reactions for press operators, while the lamps generate ozone gas, another health hazard which has to be extracted and vented outside. These problems contrast sharply with HP ElectroInk which solidifies on contact with the substrate without further treatment and is emission-free. Also because it has a relatively low fusing temperature of about 100°C - unlike the high temperatures in excess of 150° C (300° F) required for dry-powder xerography - the printing substrate is not heated, damaged or distorted.

6. light fastness

The encapsulation of the pigment sub-particles within the HP ElectroInk plastic resin helps to preserve the chemical properties of the pigments against oxidation and relative humidity effects, especially under strong ultra-violet daylight conditions. This means that color durability of printed images, either in the form of fading or deepening, is superior compared to conventional offset printing.

substrate compatibility

1. variety

HP's Indigo Digital Offset Color process is compatible with a wider variety of substrate types, surfaces and thickness than any other digital printing process. These include paper, card stock, plastic, film and metals.

Only one formulation of HP ElectroInk is needed to print on any stock that the press can handle. This means that HP Indigo press users can rapidly switch between substrates without having to worry about changing inks.

Some surfaces need a simple treatment so that the image binds to the surface better, and can withstand subsequent handling and conversion processes. HP has developed surface treatments called Sapphire for paper substrates and Topaz for plastic films. These treatments are quite simple to apply.

With conventional offset printing, different inks for papers and non-absorbing plastic films are required, the latter usually need UV polymerizable inks. When printing on paper stocks with different absorbencies, it may be necessary to adjust the viscosity of the ink by means of thinning or thickening agents, or even use specially formulated inks.

Particularly absorbent papers can also increase offset ink consumption by up to about 50%, which contrasts with HP ElectroInk where consumption has almost no dependence on the substrate properties.

Dry-powder xerography is heavily dependent upon the electrostatic properties of the paper substrate, and small changes in the environmental relative humidity may result in noticeable variations in print quality. The high fusing temperature needed for xerography puts serious limitations on the choice of coated paper stock or plastic films that can be printed.

2. lamination and over-varnishing

Stock printed with HP ElectroInk is compatible with standard coating processes such as lamination or varnishing.

Lamination of thin plastic films over the printed stock can be done in the conventional way, using a variety of solvent-borne, water-based, UV-based or solvent-free adhesives.

A varnish coating, either UV or water-based, can also be used and HP ElectroInk plastic resin withstands a large variety of chemical solvents. No significant image degradation occurs when using most of the standard coating materials.

summary

why is hp indigo's digital printing process unique?

Today, the HP Indigo Digital Offset Color printing process is the only variable imaging printing technology that can equal or exceed the quality, color range and substrate compatibility of conventional offset lithographic printing.

Direct Image (DI) offset lithographic presses use on-press plate imaging technologies. However, although these are often referred to as 'digital presses', and although they do indeed accept digital imaging data directly, they do not have a variable imaging capability. Their on-press plate imagers are in effect platesetters built into the press color units. Like a conventional lithographic press, DI presses can only print identical copies once plates have been imaged and processed. The time taken for plate imaging, processing and cost of materials, rules out any variable imaging capability.

DI litho presses also require multiple printing units in order to produce multi-colored print in a single pass. This adds to the cost, as a separate digital plate imaging unit has to be built into each printing unit.

Apart from HP's Digital Offset Color process, the other main variable imaging digital color press technology is the xerographic (dry toner) process.

The limitations of dry toner printing have been detailed above, but to recap briefly: fine detail and acceptable colors can only be achieved with very small pigment particles. However, dry toner particles have to be above

a critical size of at least 7 to 9 microns otherwise they form a dust cloud and cannot be controlled in the press.

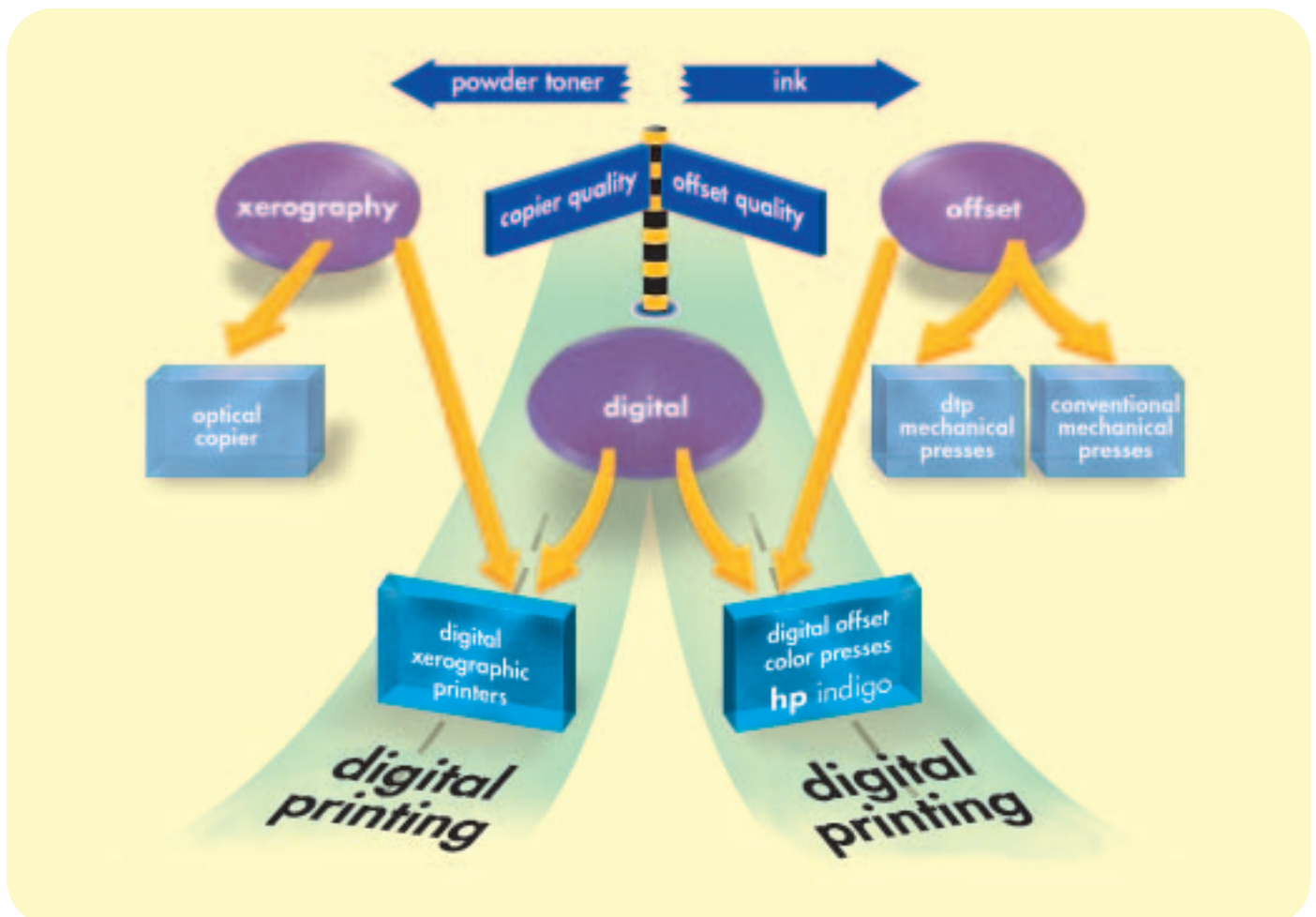
Though some xerographic processes can produce high gloss toner images, they cannot match the gloss of the substrate surface, thereby producing high "gloss contrast"- which is perceived as poor quality. HP's liquid ElectroInk uses oil to bind and distribute its pigment-carrying particles, which are about one micron in size, and consequently capable of creating much finer detail and thinner printed ink films.

Xerographic presses require multiple printing units. Single-sided models have four printing units, one per color, and double-sided presses have eight printing units - four on each side of the paper path. Therefore an important consideration when making comparisons between these and the single unit HP Indigo presses is simplicity. HP's color switching technology enables single station printing presses, which results in compact presses, less parts to maintain, lower potential for things to go wrong, and a more accurate color registration.

Ultimately, the key issues for organizations investing in digital color printing center on quality, speed, cost per page, versatility and product range. HP's technology places it as a leading contender in all these respects.

So, the customer has choices to make: if the customer requires offset quality, the choice is between mechanical offset printing and HP Digital Offset Color printing. If the customer requires digital printing, the choice is between xerographic-quality digital printing, HP's offset-quality digital printing. However, if the customer requires digital printing of offset quality, there is only one choice: HP Digital Offset Color printing.

Fig. 8: xerography vs. offset



the family of hp indigo digital presses

HP Indigo's commercial and industrial printing product lines offer customers the product best suited to their unique applications, print volume and budget requirements. All are based on HP's Digital Offset Color technology, offering its unique advantages:

- **hp indigo press 1000** – This HP Indigo press delivers uncompromising image quality, with unlimited color and substrate options. Designed for the moderate to high volume production of on-demand and personalized jobs, HP Indigo Press 1000 produces 2,000 full color A4 sheets (two-up) per hour, or 8,000 black and white A4 sheets (two-up) per hour (34 letter-size color pages per minute or 136 black and white pages per minute).
- **hp indigo press 3000** – This flagship HP Indigo press operates at a process speed of 240 feet per minute. It produces 2,000 four color A3 pages per hour. That's 68 letter-size color pages per minute or 272 black and white pages per minute. The HP Indigo Press 3000 is ideally suited for small to medium-sized commercial print shops. It's sister product, the future HP Indigo Press 3200, will be a twin-engine press, and twice as fast as the HP Indigo Press 3000. At 4,000 four color A3 images per hour, or 136 letter-size color pages per minute, the HP Indigo Press 3200 will be the industry's highest performing sheet-fed digital color press. This extraordinary speed and productivity means higher print volumes and even faster turnaround times.
- **hp indigo press s2000** - This six color press brings the advantages of on-demand, variable data printing to the industrial printing market. Printing at 1,000 four color A3 images per hour, the HP Indigo Press s2000 produces everything from printed graphic attachments and overlays to plastic cards. Substrate choices include PVC, polyester, polycarbonate and much more.
- **hp indigo press ws2000 and ws4000** - Ranging from the entry level HP Indigo Press ws2000 to the single-engine HP Indigo Press ws4000, these digital label presses are the most powerful and highest speed machines in the industry. At typical four color throughputs of 8 and 16, 32 and 64 meters per minute, respectively, these presses outpace even conventional label printing alternatives - while providing unparalleled HP Indigo print quality.





the future of hp indigo digital offset color

Since its introduction in 1993, digital offset color has grown from a technology seen primarily as one needing to create its own markets, to one capable of replacing the offset litho process in many mainstream sectors. Equally it has demonstrated the potential to transform industrial printing processes in specialist areas such as graphic overlays, labeling, plastic cards and packaging.

North America

Hewlett-Packard Company
Indigo Division
400 Unicorn Park Drive
Woburn, MA 01801
USA
Tel: +1 781 937 8800
Fax: +1 781 937 8810

Europe

Hewlett-Packard Company
Indigo Division
Limburglaan 5
6221 SH Maastricht
The Netherlands
Tel: +31 43 356 5656
Fax: +31 43 356 5600

Israel, Asia Pacific

Hewlett-Packard Company
Indigo Division
Kiryat Weizmann
P.O. Box 150
Rehovot 76101, Israel
Tel: +972 (8) 938 1818
Fax: +972 (8) 938 1338

Indigo is now a division of the Hewlett-Packard Company and its range of digital presses has been given a new look and feel, including new product names.

All brand and product names are trademarks or registered trademarks of their respective companies.

The information contained in this document is subject to change without notice.

© Copyright Hewlett-Packard Company 2002
This is an HP Indigo digital print
www.hp.com/go/indigo

